

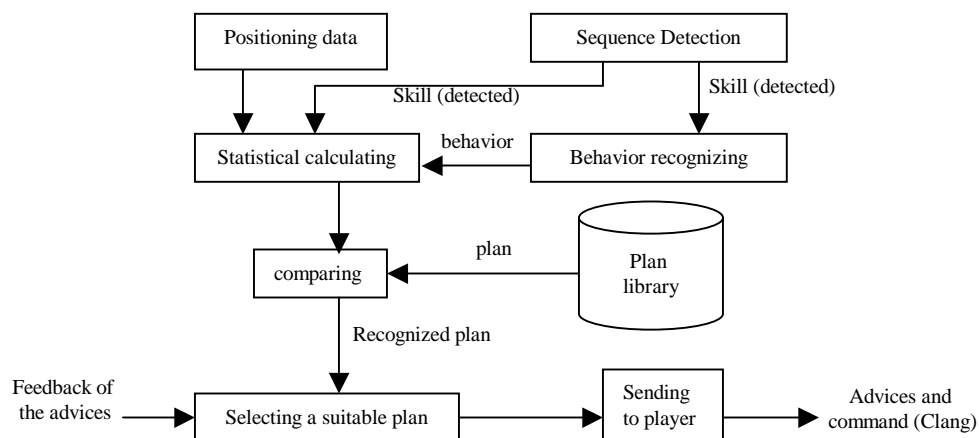
Avan simulation coach team

Mahmood Rahmani, Mahdi Shafaghi Kaftroodi,
Negar Entezari, Alireza Mohammad Shahri

Introduction

This paper presents an overview of Avan's coach approach. The main approach of Avan coach is Opponent Modelling. In order to model the behavior of opponent team we are focused on detecting the sequence of actions. The steps of detecting sequences ,analyzing and decision making for the coach is as follows:

- Receiving the information of opponent players and ball position.
- Detecting some skills such as pass to player ,pass to piont,shoot to goal or dribble. To acheive this, coach processes the information of afew cycles and compare the detecting sequences with predefined skills.
- Recognizing a higher_level behavior, based on the skills detected in previous steps.
- Calculating the number of skills and behiores was happen in the predefined areas.
- Comparing and mapping the results (statistical information) of previous steps in the plan library and selecting the appropriate plan.
- After recognizing the opponet's strategy and plan, coach chooses a suitable plan for it's playeres against the opponent's plan.



Members

Stuff:

Dr. Alireza Mohammad Shahri, <shahri@iyst.ac.ir>

Team leader:

Mahmood Rahmani, <rahmani_mahmood@yahoo.com>

Team Members:

Mahdi Shafaghi Kaftroodi, <shafaghi_mahdi@yahoo.com>

Negar Entezari, <entezari_negar@yahoo.com>

Team Web page

<http://www.qazviniau.ac.ir/robocup>